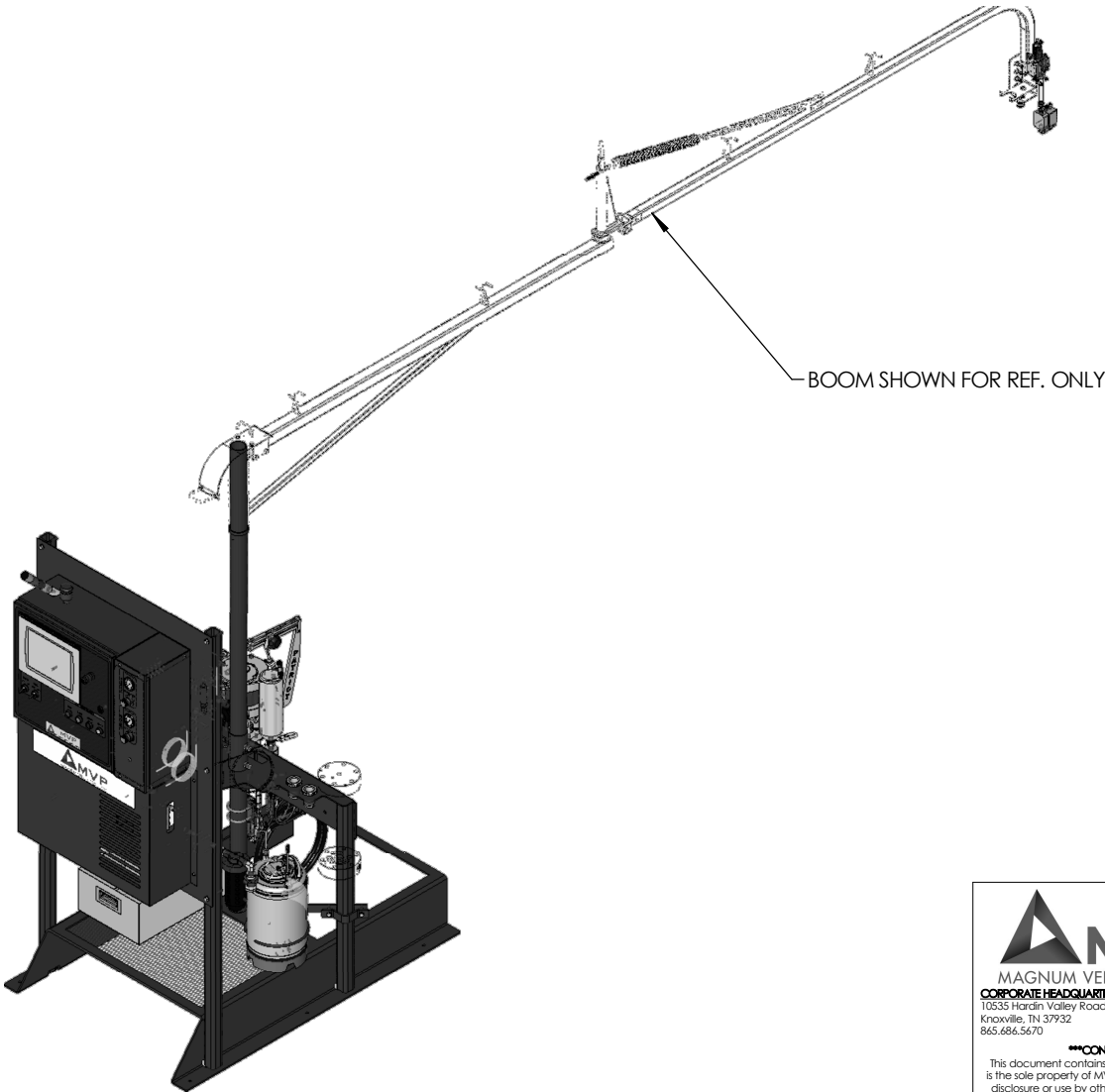

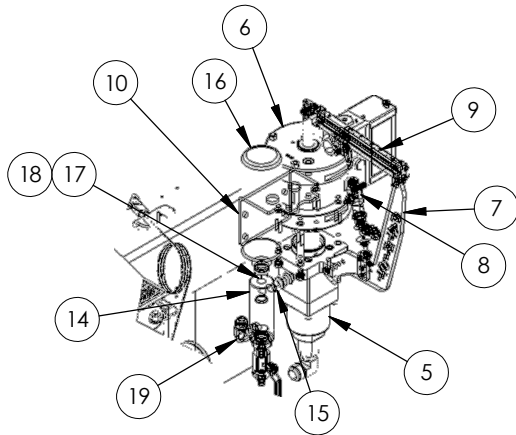


REVISION HISTORY			
REV	DESCRIPTION	DATE	APPROVED
A	INITIAL RELEASE		

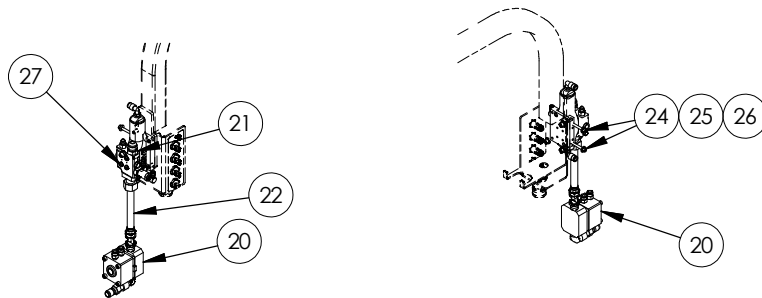


BOOM SHOWN FOR REF. ONLY

 MVP MAGNUM VENUS PRODUCTS CORPORATE HEADQUARTERS TECHNOLOGY CENTER 10535 Hardin Valley Road 1862 Ives Avenue Knoxville, TN 37932 Kent, WA 98032 865.686.5670 253.854.2660		TOLERANCES UNLESS OTHERWISE SPECIFIED, ALL DIMENSIONS ARE IN INCHES		SPECIFICATION ASSEMBLY (SEE BOM)	
		DECIMALS .XX ± .010 FRACTIONS 1/32 ANGULAR XX° ± 1/2° TIR ± .005	DECIMALS .XXX ± .003 FRACTIONS 1/64 ANGULAR XX° ± 1/2°	DESIGNED BSTAPLETON	DRAWN BSTAPLETON
CONFIDENTIAL This document contains proprietary information that is the sole property of MVP. Distribution, reproduction, disclosure or use by others, in part or in whole, is not permitted without prior written permission of MVP and all rights herein reserved.		*DO NOT SCALE DRAWING* ALL DIMENSIONS APPLY AFTER FINISH BREAK SHARP EDGES .005 MAX RADII .005 X 45° MAX CHAMFER		PROJECT	
NEXT FINAL CITY PER ASSY	NEXT ASSY WHERE USED	DWG NO INV3-PAT-7-546-A8	SHEET 1 OF 3	REV A	



PUMP ASSEMBLY



GUN MOUNTING FOR BOOM

GUN MOUNTING FOR BOOM


1	30	F-ER-1.00-HD	Ø1" E-RING HEAVY DUTY
1	29	PAT-PA-9109	SHELL RETAINER
2	28	APP-9096	HALF SHELL
1	27	PRTM-DG-3000-A	DISPENSE GUN
2	26	F-SW-1024	LOCK WASHER
2	25	F-FW-1024	FLAT WASHER - 1inch
2	24	F-CS-1024-24-SS	CAP SCREW
1	23	05244	MIXER
1	22	50056-1	EXTENSION
1	21	HF-07F-08J-SS	HEX NIPPLE
1	20	ASSY-0423-2	INNOVATOR MPG BLOCK
1	19	PF-ME-08-12J	MALE ELBOW
1	18	O-V-210	O-RING
1	17	PF-HN-12SC-08	SURGE CHAMBER FITTING
1	16	SC-6000-1	SURGE CHAMBER
1	15	PF-HN-08	HEX NIPPLE
1	14	FF-5000R-100	FILTER WITH RELIEF VALVE
4	13	F-SW-06	LOCK WASHER
4	12	F-HN-06C	HEX NUT
4	11	F-HB-06C-16	HEX BOLT
1	10	PAT-BRKT-PM-7	PUMP MOUNT - 5" & 7" PH - TUBE CART
1	9	PAT-RS-2405-055	RATIO STICKER
1	8	PAT-CP-0550-S	CAT PUMP ASSY - SIPHON
1	7	PAT-SD-3100	SLAVE DRIVE ASSEMBLY
1	6	PAT-PH-5000	POWER HEAD ASSY - 5"
1	5	PAT-LS-24050-AM	FLUID SECTION ASSY. - PATRIOT 1-3/4" DIA.
QTY	ITEM	PART NUMBER	DESCRIPTION

Parts List

<p>MVP MAGNUM VENUS PRODUCTS CORPORATE HEADQUARTERS 10535 Hardin Valley Road Knoxville, TN 37932 865.686.5670 TECHNOLOGY CENTER 1862 Ives Avenue Kent, WA 98032 253.854.2660</p>	<p>TOLERANCES UNLESS OTHERWISE SPECIFIED ALL DIMENSIONS ARE IN INCHES</p> <p>DECIMALS .XX ± .010 .XXX ± .003 TIR ± .005</p> <p>FRACTIONS 1/25 XY ± 1/32 ANGULAR XX° ± 1/2°</p>		<p>SPECIFICATION ASSEMBLY (SEE BOM)</p>	
	<p>*DO NOT SCALE DRAWING* ALL DIMENSIONS APPLY AFTER FINISH BREAK SHARP EDGES .005 MAX RADII .005 X 45° MAX CHAMFER</p>		<p>DESIGNED BSTAPLETON</p>	<p>DRAWN BSTAPLETON</p>
<p>***CONFIDENTIAL*** This document contains proprietary information that is the sole property of MVP. Distribution, reproduction, disclosure or use by others, in part or in whole, is not permitted without prior written permission of MVP and all rights herein reserved.</p>				
<p>QTY PER ASSY</p>	<p>NEXT FINAL</p>	<p>NEXT ASSY</p>	<p>FINAL ASSY</p>	<p>PROJECT DWG NO INV3-PAT-7-546-A8</p>
<p>WHERE USED</p>				<p>SHEET 2 OF 3</p>
				<p>REV A</p>

1	15	PF-HN-08	HEX NIPPLE
1	30	F-ER-1.00-HD	Ø1" E-RING HEAVY DUTY
1	29	PAT-PA-9109	SHELL RETAINER
2	28	APP-9096	HALF SHELL
1	27	PRTM-DG-3000-A	DISPENSE GUN
2	26	F-SW-1024	LOCK WASHER
2	25	F-FW-1024	FLAT WASHER - Inch
2	24	F-CS-1024-24-SS	CAP SCREW
1	23	05244	MIXER
1	22	50056-1	EXTENSION
1	21	HF-07F-08J-SS	HEX NIPPLE
1	20	ASSY-0423-2	INNOVATOR MPG BLOCK
1	19	PF-ME-08-12J	MALE ELBOW
1	18	O-V-210	O-RING
1	17	PF-HN-12SC-08	SURGE CHAMBER FITTING
1	16	SC-6000-1	SURGE CHAMBER
1	14	FF-5000R-100	FILTER WITH RELIEF VALVE
4	13	F-SW-06	LOCK WASHER
4	12	F-HN-06C	HEX NUT
4	11	F-HB-06C-16	HEX BOLT
1	10	PAT-BRKT-PM-7	PUMP MOUNT - 5" & 7" PH - TUBE CART
1	9	PAT-RS-2405-055	RATIO STICKER
1	8	PAT-CP-0550-S	CAT PUMP ASSY - SIPHON
1	7	PAT-SD-3100	SLAVE DRIVE ASSEMBLY
1	6	PAT-PH-5000	POWER HEAD ASSY - 5"
1	5	PAT-LS-24050-AM FLUID SECTION ASSY	FLUID SECTION ASSY. - PATRIOT 1-3/4" DIA.
1	4	INV3-1000-4	INNOVATOR CONTROL PACKAGE, INV3-CB-1000-10T
QTY	ITEM	PART NUMBER	DESCRIPTION

Parts List

 <p>MVP MAGNUM VENUS PRODUCTS</p> <p>CORPORATE HEADQUARTERS 10535 Hardin Valley Road Knoxville, TN 37932 865.686.5670</p> <p>TECHNOLOGY CENTER 1862 Ives Avenue Kent, WA 98032 253.854.2660</p> <p>***CONFIDENTIAL*** This document contains proprietary information that is the sole property of MVP. Distribution, reproduction, disclosure or use by others, in part or in whole, is not permitted without prior written permission of MVP and all rights herein reserved.</p>	<p>TOLERANCES UNLESS OTHERWISE SPECIFIED ALL DIMENSIONS ARE IN INCHES</p> <table border="0"> <tr> <td>DECIMALS .XX ± .010</td> <td>FRACCTIONS 1/32"</td> </tr> <tr> <td>.XXX ± .003</td> <td>ANGULAR XX° ± 1/2°</td> </tr> <tr> <td>TIR ± .005</td> <td></td> </tr> </table> <p>*DO NOT SCALE DRAWING* ALL DIMENSIONS APPLY AFTER FINISH BREAK SHARP EDGES .005 MAX RADII .005 X 45° MAX CHAMFER</p>		DECIMALS .XX ± .010	FRACCTIONS 1/32"	.XXX ± .003	ANGULAR XX° ± 1/2°	TIR ± .005		<p>SPECIFICATION ASSEMBLY (SEE BOM)</p> <table border="1"> <tr> <td>DESIGNED BSTAPLETON</td> <td>DRAWN BSTAPLETON</td> <td>DATE 11/28/2016</td> </tr> </table>		DESIGNED BSTAPLETON	DRAWN BSTAPLETON	DATE 11/28/2016
	DECIMALS .XX ± .010	FRACCTIONS 1/32"											
	.XXX ± .003	ANGULAR XX° ± 1/2°											
	TIR ± .005												
DESIGNED BSTAPLETON	DRAWN BSTAPLETON	DATE 11/28/2016											
<p>DESCRIPTION</p>													
<p>PROJECT</p>													
<p>NEXT FINAL</p>		<p>NEXT ASSY FINAL ASSY</p>											
<p>QTY PER ASSY</p>		<p>WHERE USED</p>											
		<p>DWG NO INV3-PAT-7-546-A8</p>											
		<p>SHEET 3 OF 3</p>											
		<p>REV A</p>											