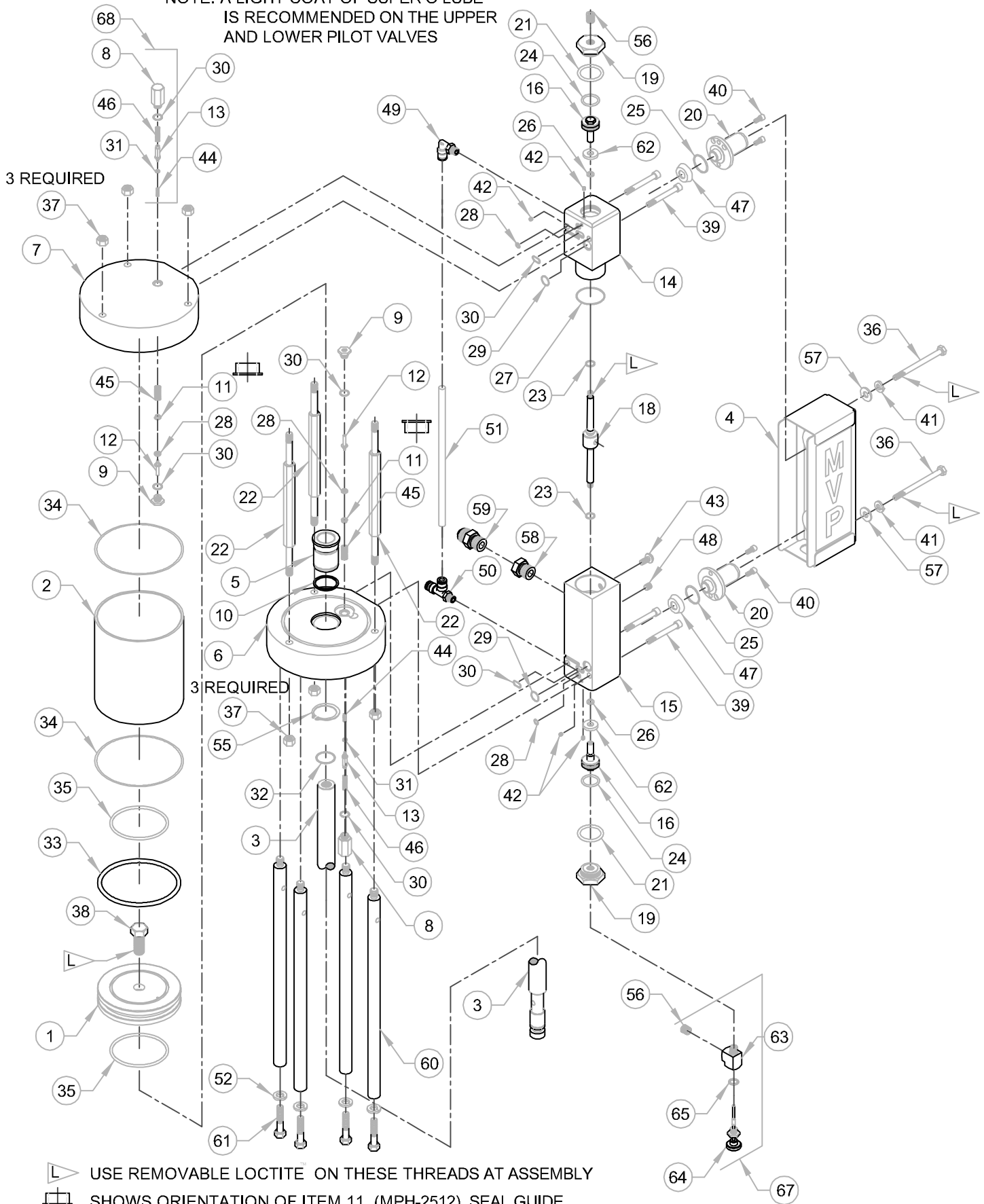


NOTE: A LIGHT COAT OF SUPER O LUBE  
IS RECOMMENDED ON THE UPPER  
AND LOWER PILOT VALVES



USE REMOVABLE LOCTITE ON THESE THREADS AT ASSEMBLY  
 SHOWS ORIENTATION OF ITEM 11, (MPH-2512), SEAL GUIDE.

# MAGNUM VENUS PLASTECH

Assembly - 4 1/4 Power Head 4" Stroke

VPH-4250

REV. Q = ITEM 51 WAS 01417 11/09/07 BT2  
 R = ITEM 38 F-HBFT-08C-20-GR5 05/08/09 BT2  
 S = ADDED SUPER O LUBE NOTE FOR PILOT VALVES 05/25/11 BT2  
 T = ORIENTED MUFFLER FOR DOWNWARD EXHAUST 02/23/18 BT2

# Assembly - 4 1/4 Power Head 4" Stroke VPH-4250

## PARTS LIST

ITEM	PART NO.	QTY	DESCRIPTION
1	VPH-4251	1	PISTON - 4 1/4 PUMP
2	VPH-4252	1	CYLINDER - 4 1/4 PUMP
3	VPH-4259	1	PISTON ROD
4	VPH-4253-01	1	MUFFLER ASSY - 4" STROKE PUMP
5	VPH-4254	1	PISTON ROD BUSHING
6	VPH-4255	1	LOWER ENDCAP - 4 1/4 PUMP
7	VPH-4256	1	UPPER ENDCAP - 4 1/4 PUMP
8	MPH-2541	2	INLET SPRING HOUSING - PILOT VALVE
9	MPH-2511-01	2	ASSY - STEM SEAL
* 10	O-B-121	1	O-RING
11	MPH-2512	2	SEAL GUIDE
12	MPH-2513	2	VALVE STEM - PILOT VALVE
13	MPH-2540	2	INLET ROD - PILOT VALVE
14	VPH-4257	1	UPPER VALVE BLOCK - 4" STROKE PUMP
15	MPH-2516	1	LOWER VALVE BLOCK
16	MPH-2517	2	VALVE PISTON
18	VPH-2504	1	VALVE POPPET
19	MPH-2521	2	VALVE END CAP
20	MPH-2522	2	VALVE EXHAUST
* 21	O-B-019	2	O-RING
22	VPH-4258	3	TIE ROD 4" STROKE PUMP
* 23	O-U-204-90	2	O-RING
* 24	O-B-116	2	O-RING
* 25	O-B-020	2	O-RING
* 26	O-D-010-90	2	O-RING
* 27	O-B-125	1	O-RING
* 28	O-B-008	4	O-RING
* 29	O-B-013	2	O-RING
* 30	O-B-012	6	O-RING
* 31	O-U-006	2	O-RING
* 32	O-B-118	1	O-RING
* 33	O-B-344	1	O-RING
* 34	O-B-156	2	O-RING
* 35	O-B-409	2	O-RING
36	F-HB-04C-56-SS	2	HEX HEAD CAP SCREW
37	F-HN-05F	6	HEX NUT
38	F-HB-08F-20-GR5	1	HEX HEAD CAP SCREW
39	F-CS-04C-32-SS	4	SOCKET HEAD CAP SCREW
40	F-CS-1024-06-SS	4	SOCKET HEAD CAP SCREW
41	F-SW-04-SS	2	LOCK WASHER
42	F-SS-832-02-SS	4	CUP POINT SET SCREW
43	F-BHCS-04C-08-SS	1	BUTTON HEAD CAP SCREW
44	MPH-2526	2	SPRING
45	MPH-2528	2	SPRING
46	MPH-2533	2	SPRING
* 47	MPH-2529	2	DIAPHRAGM
48	PF-AP-04-SS	1	PIPE PLUG
49	MPH-2539	1	PUSH POLY FITTING - MALE ELBOW
50	MPH-2538	1	PUSH POLY FITTING - MALE TEE
51	MS-2052-1	.56ft	Ø1/4 x 6-3/4 POLY TUBING
52	F-SW-06	4	LOCK WASHER
55	MPH-3261	1	SNAP - RING
56	PF-AP-02-SS	2	PIPE PLUG
57	F-FW-04	2	FLAT WASHER
58	PF-RB-08-06	1	PIPE BUSHING
59	PF-HN-06-06S	1	ADAPTER
60	2104-4-1	4	TIE ROD
61	F-HB-06C-24-GR8	4	GRADE 8 HEX CAP SCREW
62	MPH-3262	2	PISTON STOP

## PARTS LIST

ITEM	PART NO.	QTY	DESCRIPTION
63	00276	1	TEE FITTING
64	MPH-2546-01	1	VALVE STEM ASSY
65	MPH-2545	1	SEAL
66	DONOTOILAIMOTOR	1	DONOT OIL DECAL (NOT SHOWN)

## OPTIONAL PARTS AND ASSEMBLIES

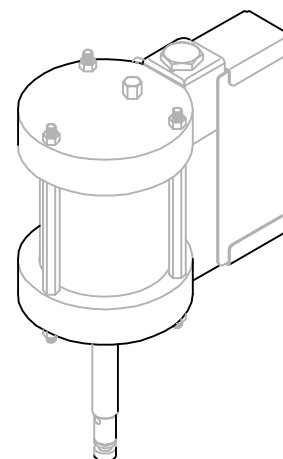
### PARTS LIST

ITEM	PART NO.	QTY	DESCRIPTION
67	MPH-2542	1	RESET BUTTON ASSY
68	MPH-2540-CK	1	VALVE CONV KIT
	VPH-SB	1	SHIFT BLOCK ASSY

## REPAIR KITS

PART NO.	DESCRIPTION
* MPH-4250-SK	SEAL KIT

FIGURE 1-1



\* COMPONENTS INCLUDED WITH SEAL KIT.