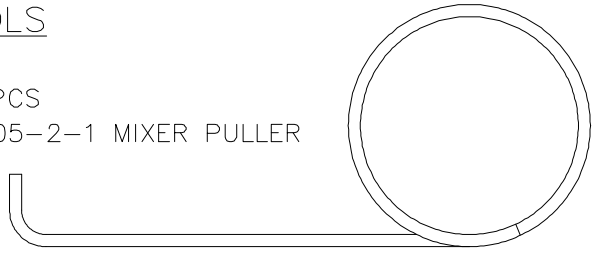


44030-1

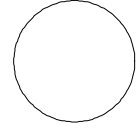
SPARE PARTS & TOOL KIT SUPERPRO II 4:1 & 7:1 HYDRAJECTOR UNIT

TOOLS

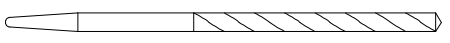
2 PCS
6705-2-1 MIXER PULLER



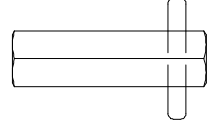
1 PCS
9201-4-20 5/8 POLY BALL



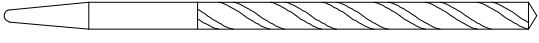
1 PC
6705-3-1 ALIGNMENT TOOL - CATALYST SEAL



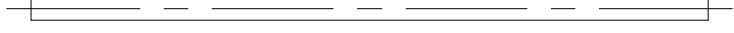
1 PC
6705-1-1 PACKING BIT



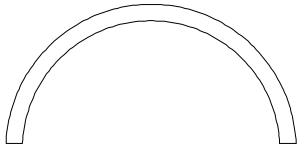
1 PC
6705-4-1 ALIGNMENT TOOL - RESIN SEAL



1 PC
9301-7-1 CATALYST NEEDLE SEAT REMOVAL TOOL



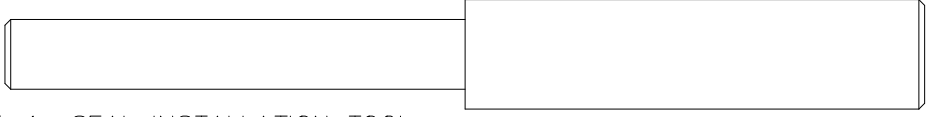
1 SET
45018-1 CLAMSHELL PACKING REMOVAL TOOL



1 PC T-002643C SPRAY NOZZLE

1 PC T-002562C SPRAY NOZZLE

1 PC
6705-5-1 SEAL INSTALLATION TOOL



- 1 PC
9301-3-2 1/4" NUT DRIVER
- 1 PC
9301-2-1 1-1/2" SLOTTED INSERT BIT
- 1 PC
9301-2-2 1" SLOTTED INSERT BIT
- 1 PC
9301-1-1 3/16" HEX WRENCH
- 1 PC
9301-1-2 5/64" HEX WRENCH
- 1 PC
9301-1-3 5/32" HEX WRENCH
- 1 PC
08061 7/16 COMBINATION WRENCH
- 1 PC
08476 1/2 x 9/16 OPEN WRENCH
- 1 PC
08469 HEX KEY SET - FOLD UP
- 1 PC
6706-2-1 1oz WHITE GREASE
- 2 PCS 95039-1 WARNING - AIRLESS SPRAY WOUNDS

KITS

- 1 PC 6702-05-01 REPAIR KIT - METER PUMP
- 1 PC 00934-1 MINOR REPAIR KIT - P21 STD RESIN PUMP
- 1 PC 6702-013-01 REPAIR KIT - SUPERPRO II GUN